

Anlev Elevator Group

(operations in the United Kingdom)

MODERN SLAVERY STATEMENT

Date: 16/08/2024

Version 3

This statement has been produced pursuant of Section 54 (1) of the Modern Slavery Act. It constitutes the slavery and human trafficking statement of Anlev Elevator Group (operations in the United Kingdom) for the financial year ending 31 December, 2024.

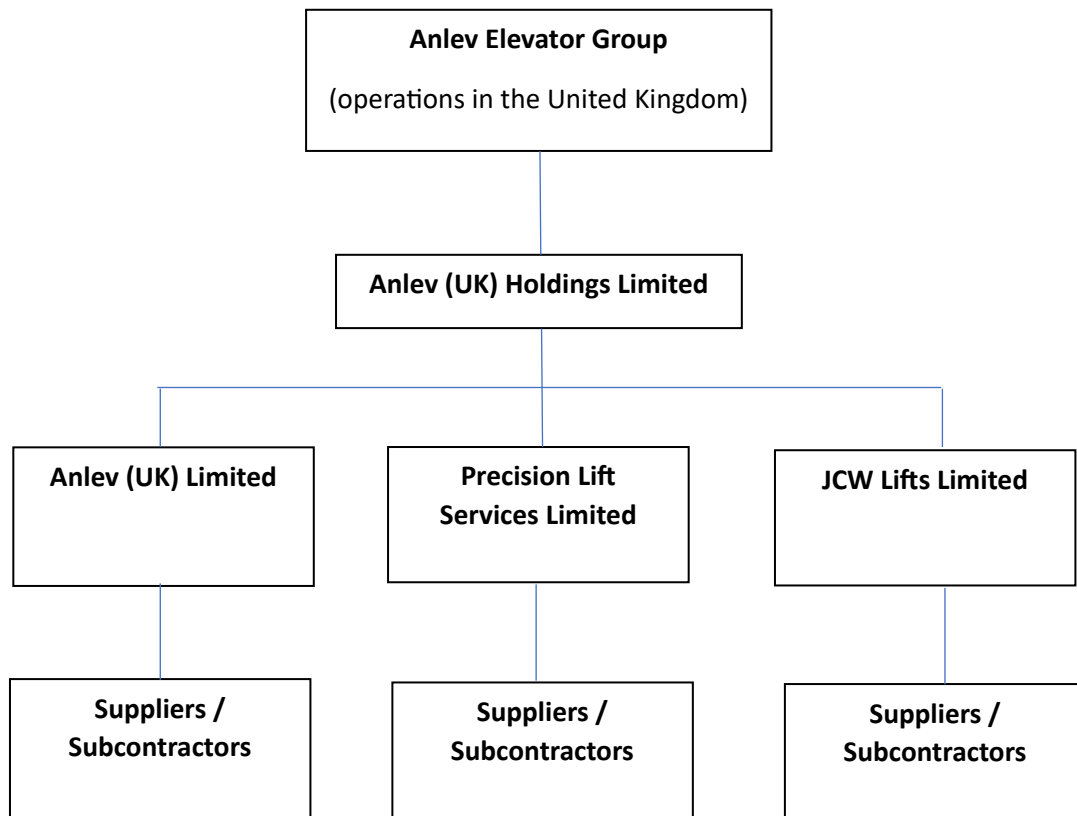
Organisational Structure

Anlev Elevator Group (operations in the United Kingdom) is made up of Anlev (UK) Holdings Limited, Anlev (UK) Limited, Precision Lift Services Limited, and JCW Lifts Limited.

Our Business

Anlev Elevator Group (operations in the United Kingdom) operates from a number of regional offices and sites across England, Scotland and Wales.

Our Supply Chain



The Anlev Elevator Group (operations in the United Kingdom) supply chain is made up of material and plant suppliers and trade subcontractors. Our zero tolerance for modern slavery and our respect for human rights, including children's rights, are built into all our processes and business practices. We will work with our supply chain partners to ensure that modern slavery is not present in the supply chain, and we want all our suppliers to think about the steps they can take to provide us with the assurance that:

- Modern slavery is not present in their company.
- Safe and fair working conditions are provided.
- The risks within their own supply chain are understood.
- Zero tolerance, responsible management and compliance with all legal requirements is reflected in your policies, procedures, practices and in contracts with your suppliers.

We will annually review suppliers to carry out audits as part of our supplier management, focusing closely on those we consider to be at greatest risk, including those:

- Who operate by employing casual or temporary labour.
- Operate outside of the UK / EU
- Manufacture or trade in raw material outside the UK / EU

We are developing KPIs specifically focusing on our supply chain and their approach to tackling modern slavery and trafficking. Provisions for managing slavery are set out in our supply chain questionnaire as part of the construction line process.

We will incorporate a provision in our terms and conditions that our suppliers should take appropriate steps to ensure that there is no slavery or human trafficking in the supply chain. Any new suppliers will be required to declare that they are not involved in modern slavery and human trafficking, and that they have not been investigated in connection with any offence involving slavery or human trafficking.

Working with our supply chain

As an organisation, we have a duty to understand the implications of modern slavery within our supply chains. As part of ongoing contract and relationship management, we are asking colleagues to consider the following issues when working with partners:

- Is employment freely chosen within the supply chain partner?
- Is freedom of association and the right to collective bargaining (i.e. trade union membership) respected?
- Are working conditions safe and hygienic?
- Is child labour used?

- Are living wages paid?
- Are working hours reasonable?
- Are appropriate anti-discrimination procedures in place?
- Are zero hours contracts routinely used?
- Are workers protected from physical, verbal or sexual abuse in the workplace?

If a supply chain partner is unable to provide a positive, reasonable response to the questions above, departments should consider whether the supply chain partner is the type of organisation we wish to be associated with as an ethical organisation.

Awareness across the business

We have incorporated a series of measures through our high-level policies, including recruitment process, code of conduct and procurement. Training is being developed through our in-house online academy to be delivered to all staff in the businesses and will be made readily available to the supply chain.

All directors and senior management will be briefed on the importance.

This statement has been approved by the senior management of the Anlev Elevator Group (operations in the United Kingdom) and applies to all companies operating in the United Kingdom under the Group.

Approved by:

A handwritten signature in black ink, consisting of a large, stylized initial 'S' followed by a cursive 'B' and a long, sweeping horizontal stroke.

Stuart Beard – Chief Operations Officer

Date – 16/08/2024